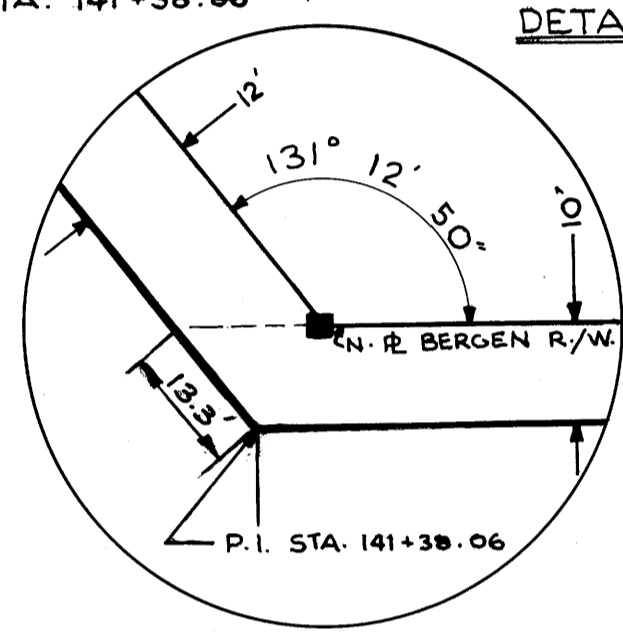
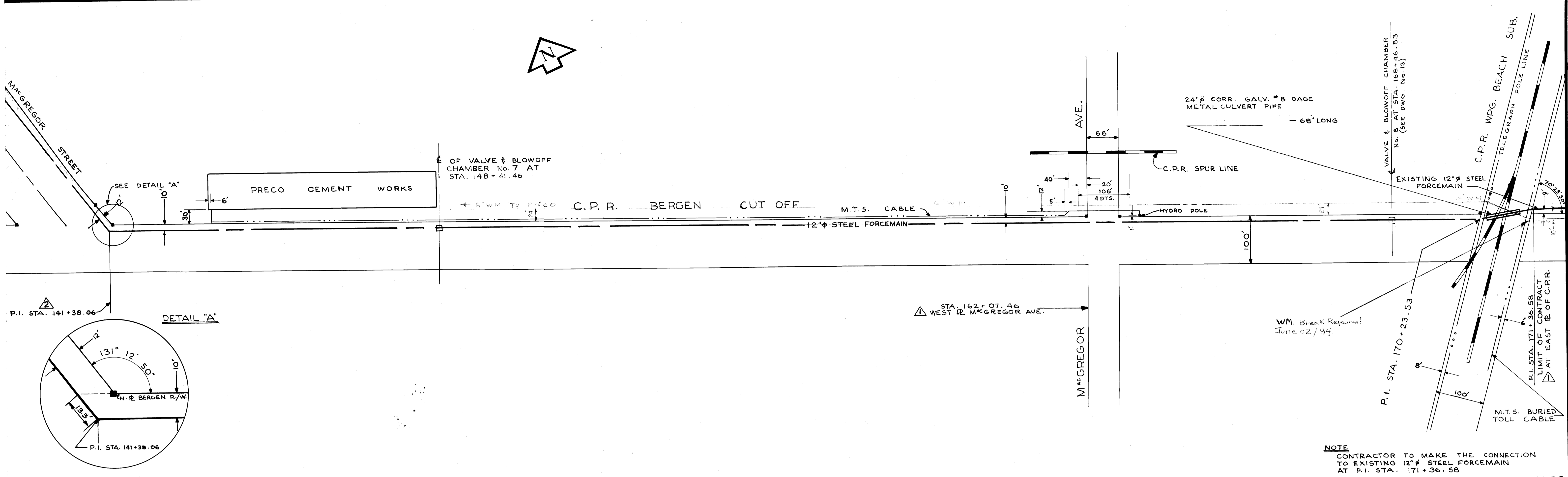


466

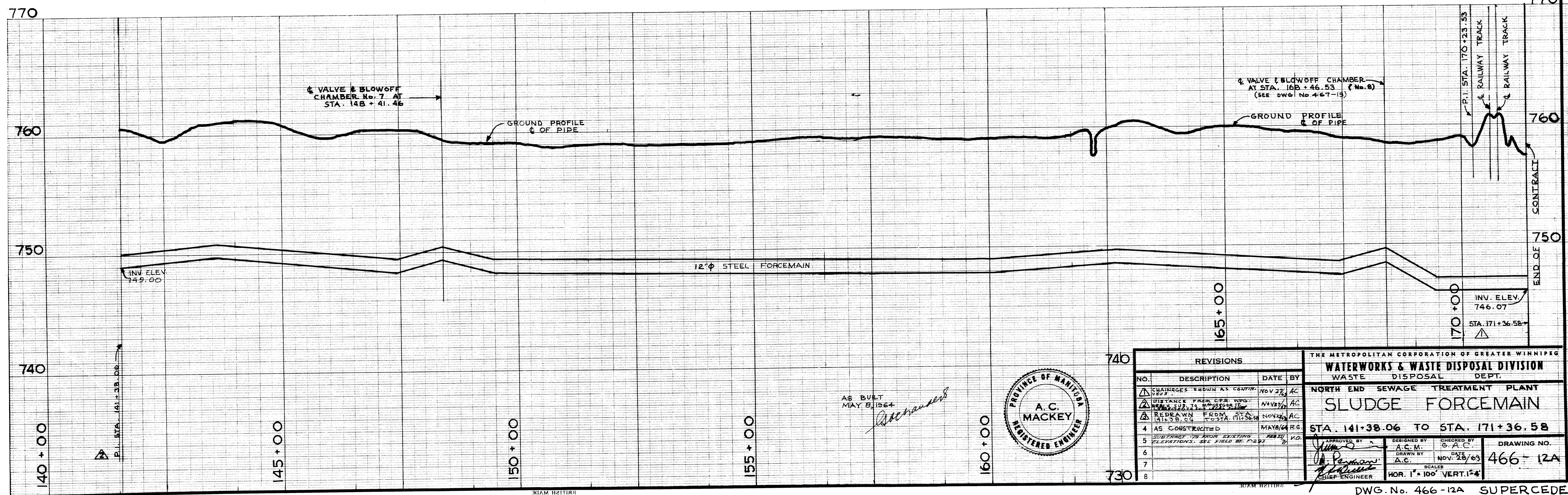
REF. or DRAWING No.

DETAILS

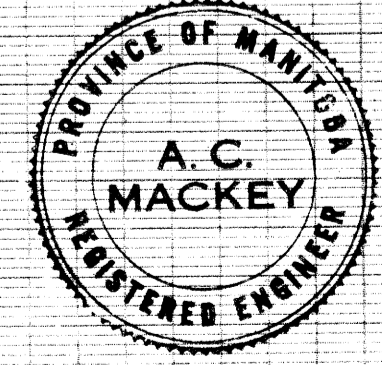
FILE #  
FM 10076



NOTE  
CONTRACTOR TO MAKE THE CONNECTION  
TO EXISTING 12" STEEL FORCEMAIN  
AT P.I. STA. 171+36.58



AS BUILT  
MAY 8, 1964  
*Attchments*



REVISIONS				THE METROPOLITAN CORPORATION OF GREATER WINNIPEG WATERWORKS & WASTE DISPOSAL DIVISION WASTE DISPOSAL DEPT.	
NO.	DESCRIPTION	DATE	BY	NORTH END SEWAGE TREATMENT PLANT SLUDGE FORCEMAIN	
1	CHANGES SHOWN AS CONTR. NO. 2	NOV 2/63	AC	STA. 141+38.06 TO STA. 171+36.58	
2	DISTANCE FROM C.P.R. WPG. SUB. 171+36.58 TO STA. 170+23.53	NOV 2/63	AC	DESIGNED BY A.C. M.	CHECKED BY G.A.C.
3	REPAIRED FROM STA. 170+23.53 TO STA. 171+36.58	NOV 2/63	AC	DRAWN BY A.C.	DATE NOV. 28/63
4	AS CONSTRUCTED	MAY/64	R.C.	APPROVED BY <i>J. Perman</i>	DRAWING NO. 466-12A
5	CONTRACT TO ADD EXISTING ELEVATIONS. SEE FIELD BK. P. 291	NOV 2/63	VD	SCALE HOR. 1" = 100' VERT. 1" = 4'	
6					
7					
8					

DWG. No. 466-12A SUPERCEDES  
DWG. Nos. 12, 14, 15  
MICROFILMED NOV 76 Micro-Filmed 1966